



IIPM

भारतीय बागान प्रबन्ध संस्थान बेंगलुरु
INDIAN INSTITUTE OF PLANTATION MANAGEMENT BENGALURU
(An Autonomous Organization of the Ministry of Commerce & Industry, Government of India)



RECRUITERS' GUIDE 2019-21

The Institute of “Exemplary Perspectives”

*Exemplifying India's Agri Base Through Excellence In
Agribusiness, Commodity & Plantation Development*



Message from the Director

Indian Institute of Plantation Management (IIPM) Bengaluru - Centre of Excellence and the first-of-its-kind National Institute, was established at the initiative of the Ministry of Commerce & Industry, Government of India and has a track record of exemplary contribution for 27 years. It is co-promoted by the Commodity Boards of India viz., Coffee Board, Rubber Board, Tea Board, Spices Board & Tobacco Board and Plantation Industry Associations. IIPM has been conceived as a world renowned academic institution focusing in the field of agri-plantation and management education. The Institute has educational membership with the AACSB-USA & EFMD-Brussels and obtained permanent accreditation from HLACT-USA.

IIPM offers an array of experiences that you may find unique alongside a management program in Agribusiness, Commodity, Food and Plantations. As a step towards strengthening an Intensive-Industry-Institution-Interaction (4-Is) between our flagship program Agribusiness & Plantation Management (ABPM) and the marketing fraternity, we invite eminent speakers from the country and around the globe to conduct sessions on major issues related to industry need. This gives IIPM students and the corporate an opportunity to exchange ideas on a common platform. The institute offers its teaching and learning experience through classroom lectures, video, seminars, group work, case study methods, role plays, live projects, tasting (sensory test for product innovations), market survey, field & industry visits, study abroad and guest lectures, as part of assurance of learning (AOL). Our development paradigm is centered around the creation of BEST (Behavioural, Economic, Strategic & Technical) Manager.

It is our sincere wish that recruiters enjoy reading this brochure. On behalf of the faculty and students, we extend our warmest welcome to participate in the campus recruitment process at IIPM.

Prof. V. G. Dhanakumar

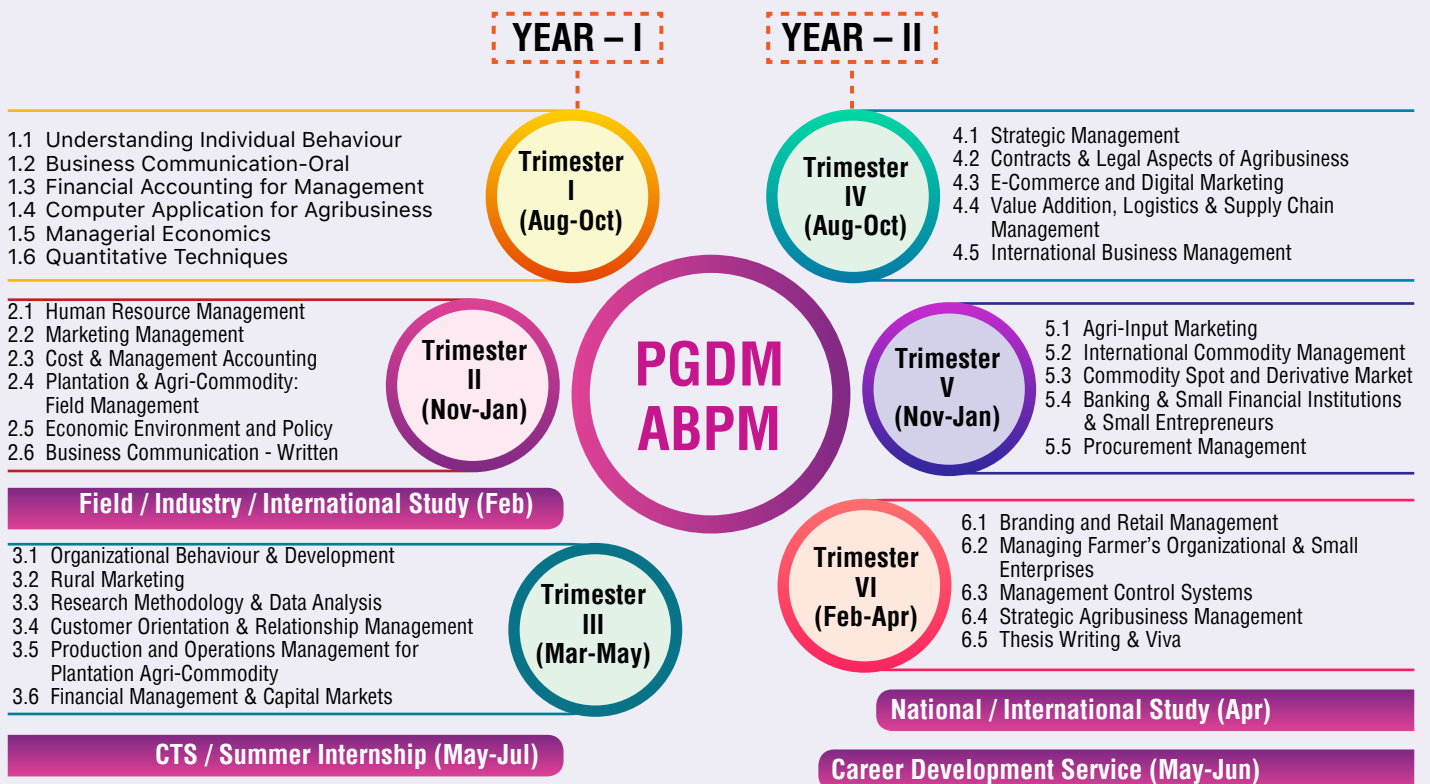


POST GRADUATE DIPLOMA IN MANAGEMENT : AGRIBUSINESS AND PLANTATION MANAGEMENT (PGDM - ABPM)

Approved by AICTE-MHRD-GOI

The PGDM-ABPM Professional Management Program aims at providing management education to the entrants in the plantation and agribusiness sector. The program equips students for different managerial positions in the plantation industries and agribusiness sector. To attain this objective, the program incorporates domain and business specific knowledge.

PGDM-ABPM Course Structure Nurturing A Step by Step to Learning



Uniqueness of the ABPM Program

Summer Internship

- Apart from course-related projects, the program features an intense 12 week project to complement the synergistic partnership between IIPM students and the industry.
- As part of their internships, students work on Value Chain Analysis, Quality of Worklife & Employee Relationship, Market Analysis, Production & Operations Management, Merchandize Management, Special Case Analysis, etc.

National / International Study

- Exposure to MNCs and learning from reputed faculty across the globe (Singapore, Malaysia, Cambodia, Thailand, China, USA, UK, Africa, Indonesia, etc.)
- Establishing link between agribusiness, commodity, plantations, corporatization and academics expertise around the world.

Career Development Service (CDS)

- CDS Unit facilitates students to identify their potential skills and nurture them to be employable in their preferred sector.
- Organizations from agribusiness, agri-technology, commodity and plantation sectors are invited to tap the talent from our current batch of students.
- Students are equipped to work anywhere in the value chain of the Business Plan - Production, Procurement, Processing, Marketing, Sales & Distribution, Commodity Trading, Supply Chain, Retailing, Logistics, Finance, HRD, Contract Farming, Food Quality/Safety Management, Big-data Analysis/Operations Management, Service Sector, etc.
- Organizations are invited to visit IIPM campus for placement process that includes Pre-Placement Talks, Group Discussion, Written Test and Interviews.
- Organizations are requested to route all correspondences through the Career Development Service Unit.

CORPORATE CONNECTIVITY

An indicative list of organizations where our students are placed



Agri Inputs

ADAMA India Pvt. Ltd.
Ag-CropChem
AgroStar India (Ulink)
Astrac Group
Bayers CropScience
Bharat Insecticides Limited
Biostatd India
Chambal Fertilizers and
Chemicals Limited
Coromandel International
Corteva Agrisciences
Dhanuka Agritech Private
Limited
East-West Seeds
Godrej Agrovet Limited
H M Clause
Hiffield-Ag
ITC-ABD
Kalash Seeds
Mahyco Seeds (Grow Indigo)
Matix Fertilizers
Netafim India
Organica Biotech
Rallis India Limited (A TATA
Enterprise)
Sinochem India
Sumitomo Chemicals
Villageagro Agritech
Willowood Agrochemicals
Yara Fertilizers



Allied Inputs

Alltech Biotech
Avanti Feeds
Biocon India Limited
DuPont India
Sequoia Biosolutions
United Alacrity India



Research / Consultancy

Agriculture Skills Council of
India (ASCI)
Beroe Inc.
CropIn Technology
Eka Plus Software Solutions
eThota Technology Solutions
Farms Foundation / Evon
Ventures
FASAL
Global Agrisystems Pvt. Ltd.
International Agriculture
Consultancy Group (IACG)
JoyGreens Landscaping &
Consultancy Services
Markets and Markets
Mordor Intelligence
TransGraph Consulting Pvt. Ltd.
Vrutti Livelihood Resource
Centre
Way2Agribusiness.com



Banking / Finance

Axis Bank
Agrifi
HDFC Bank
ICICI Bank
National Bank for Agriculture
and Rural Development
(NABARD)
Reserve Bank of India
Samastha Microfinance
Samunnati Agri-Value Chain
Spandana Spoorthy
Microfinance
Ujjivan Small Finance Bank



Commodities

Export Trading Group
Indian Commodities Pvt. Ltd.
Karvy ComTrade
Kotak Commodities
Louis Dreyfus Commodities
National Commodity &
Derivatives Exchange
Limited (NCDEX)
NCDEX-eMarkets Limited
Nirmal Bang Securities
Origo Commodities



Food Processing

Adani Agrifresh
Bogatchi Chocolates
Fresh Sharp
Griffith Laboratories
GrowerZampa Wineyards
Janani Foods
Kancor Ingredients
Licious
Natural Remedies Pvt. Ltd.
Parle Agro Industries Pvt. Ltd.
Pisum Food Services
Sresta Naturals (24Mantra
Organics)
Suguna Foods
Waycool Foods and Products



Plantations

Assam Company Limited
AVT Plantations
BeForest Lifestyle
Deejay Group
Harrisons Malayalam Limited
(HML)
ITC-Paperboards Division
JK Papers
Manjushree Plantations
McLeod Russel
Perfura Technologies
Poabs Organic Estates
Sona Valliappa Group
Tata Coffee Limited



SCM

Ayurvet India
DeHaat
Farmley
Gratitude Farms
Gubba Cold Storage
Homeneed Agri.
INI Farms
Kisanyaard.com
National Bulk Handling
Corporation Limited
National Collateral Management
Services Limited (NCML)
Ninjacart India
Star Agri Warehousing Limited
Suminter India Organics
Take Agro Limited
TotalStart.org
Veganza
VeGrow



Retail

Aditya Birla Retail Limited
BigBasket.com
Hypercity India
Metro Cash and Carry Limited
Myntra India
Reliance Retail Limited
Sahyadri Agro Retail Limited
SPAR Max Hypermarkets India
Spencer's Retail (RPG Group)



Certification / NGOs

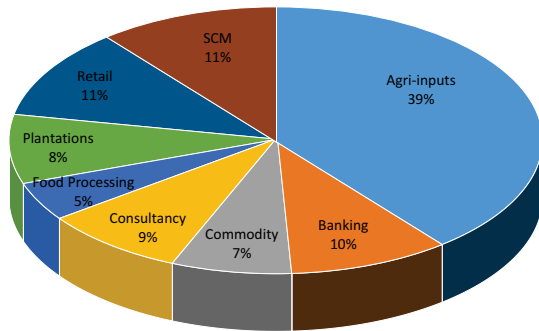
Aditi Organic Certification
Pvt. Ltd.
International Competence
Centre for Organic
Agriculture (ICCOA)
National Skills Foundation of
India (NSFI)
Pragya India
The Global Green Company
Vegetable Growers
Association of India (VGAI)



Abroad

Alltech Biotech (USA)
ECOM Gill Coffee
Trading Private Limited
(Switzerland)
Grafax Cotton (Zimbabwe,
Zambia, Mali)
Grameen Bank (Bangladesh)
Mount Meru Group
(Tanzania)
Nellara Group of Companies
(Dubai)
Olam International
(Singapore)
PT Hilton Duta Lestari
(Indonesia)
Sunrise Industries (Nepal)
World Trade Centre (Dublin,
Ireland)

Placement: Sector-wise Representation



IIPM



(An Autonomous Organization of MC&I-GOI)

Permanent Accreditation
HLACT-Texas (USA)



Educational Membership
AACSB-USA & EFMD-Brussels

AICTE-MHRD-GOI Approved
NBA Accreditation
and
AIU Equivalence for ABPM



Contact Information:

Ms. Shilpa S
Placement Associate
Career Development Service Unit

Indian Institute of Plantation Management Bengaluru
Jnana Bharathi Campus, Malathalli P.O., Bengaluru - 560 056
Ph: +91-80-23212770; 23211716; Fax: +91-80-23212775;
Email: iipmbplacementoffice@gmail.com; placement@iipmb.edu.in;
Website : www.iipmb.edu.in